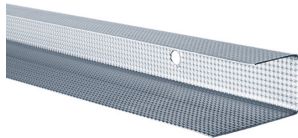


## Product data sheet

### RigiProfil UD 28 unequal



**Product description:** Metal stud according to DIN 18182-1 / DIN EN 14195 made of sheet steel according to DIN EN 10346. Material tolerances according to DIN EN 10143.

**Area of application:** For the construction of substructures in gypsum plasterboard systems. e.g. for sliding connections in ceiling constructions.



Oberfläche  
MultiTec



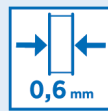
Korrosions-  
schutz



Anwendung  
Innenraum



Baustoffklasse



Blechdicke

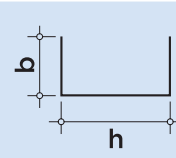


Lagerung

## Technical specifications

### Usage

RigiProfil MultiTec is the efficient system profile from Rigips, which is used to create substructures in plasterboard systems. A special feature of RigiProfil is the special MultiTec surface structure, which offers a variety of advantages in processing. RigiProfil complies with the requirements of DIN 18182-1 and DIN EN 14195 and is manufactured from steel of the grade DX51D+Z (material no. 1.0226) by cold forming.

Parameters	Sign	Value	UOM	Drawing
<b>Dimensions</b>				
Metal thickness	t	0.6	mm	
Profile height	h	28.5	mm	
	Nominal	28	mm	
Profile width	b	27.0	mm	
	x	45.0	mm	
Length	l	3,000	mm	

The information in this publication is based on our current technical knowledge and experience. In view of the many factors that may affect processing and application of our products, these data do not relieve the users of our products from the responsibility of carrying out their own inspections and tests, as they only represent general guidelines. They neither do imply any legally binding assurance of certain properties or of suitability for a particular application. It is the responsibility of those to whom we supply our products to ensure that any proprietary rights and existing laws and regulations are observed. We reserve the right to modifications in the interests of technical advancement without prior notice.

## Product data sheet

RigiProfil UD 28 unequal

Parameters	Sign	Value	Unit	Certification
<b>Material</b>				
Type of material		Galvanised sheet steel		EN 10346
Material		DX51D+Z		
Corrosion protection		Z100		EN 14195
Surface		MultiTec structure		
<b>Building material class</b>				
Fire behaviour		A1		EN 13501-1
<b>Miscellaneous</b>				
Additional Note		RigiProfil MultiTec is European patented (No. EP 3 017 120)		
<b>Notes</b>				
Storage		Dry Flat and level Air access		
Shelf Life		Unlimited		
Form of delivery		According to Pricelist		
Waste key		17 04 05		

The values listed in this product data sheet only reflect the performance characteristics of the products. In addition, gypsum plaster systems have structural and structural properties, which can be found in our system documentation (e. g. Planen und Bauen).

The information in this publication is based on our current technical knowledge and experience. In view of the many factors that may affect processing and application of our products, these data do not relieve the users of our products from the responsibility of carrying out their own inspections and tests, as they only represent general guidelines. They neither do imply any legally binding assurance of certain properties or of suitability for a particular application. It is the responsibility of those to whom we supply our products to ensure that any proprietary rights and existing laws and regulations are observed. We reserve the right to modifications in the interests of technical advancement without prior notice.