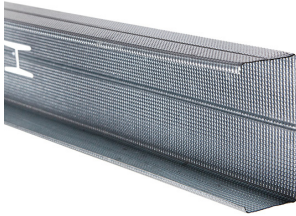








Product data sheet

RigiProfil MultiTec CW 100



Product description: Metal stud according to DIN 18182-1 / DIN EN 14195 made of sheet steel according to DIN EN 10346. Material tolerances according to DIN EN 10143.

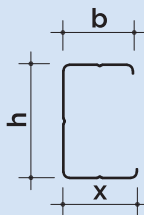
Area of application: For the construction of substructures in gypsum plasterboard systems.

					
Oberfläche MultiTec	Korrosionsschutz	Anwendung Innenraum	Baustoffklasse	Blechdicke	Lagerung

Technical specifications

Usage

RigiProfil MultiTec is the efficient system profile from Rigips, which is used to create substructures in plasterboard systems. A special feature of RigiProfil is the special MultiTec surface structure, which offers a variety of advantages in sound insulation and processing. RigiProfil complies with the requirements of DIN 18182-1 and DIN EN 14195 and is manufactured from steel of the grade DX51D+Z (material no. 1.0226) by cold forming. RigiProfil MultiTec has an H-punching, which is located at a distance of 350 mm from the profile ends. The geometry of the profile allows nesting.

Parameters	Sign	Value	UOM	Drawing
Dimensions				
Metal thickness	t	0.6	mm	
Profile height	h	98.6	mm	
	Nominal	100	mm	
Profile width	b	49.0	mm	
	Nominal	50	mm	
	x	47.0	mm	
Length	l	2,500 / 2,600 / 2,750 / 3,000 / 3,250 / 3,500 / 3,750 / 4,000 / 4,250 / 4,500 / 5,000 / 5,500 / 6,000 / 6,500 / 7,000	mm	
Profile parameter	I_{yy}	189,996	mm ⁴	

The information in this publication is based on our current technical knowledge and experience. In view of the many factors that may affect processing and application of our products, these data do not relieve the users of our products from the responsibility of carrying out their own inspections and tests, as they only represent general guidelines. They neither do imply any legally binding assurance of certain properties or of suitability for a particular application. It is the responsibility of those to whom we supply our products to ensure that any proprietary rights and existing laws and regulations are observed. We reserve the right to modifications in the interests of technical advancement without prior notice.

Product data sheet

RigiProfil MultiTec CW 100

Parameters	Sign	Value	Unit	Certification
Material				
Type of material		Galvanised sheet steel		EN 10346
Material		DX51D+Z		
Corrosion protection		double-sided 100 g/m ² (Z100)		EN 14195
Surface		MultiTec structure		
Typesetting				
Type		CW100x50x06-Z100		DIN 18182-1
		C/50/100/50		EN 14195
Building material class				
Fire behaviour		A1		EN 13501-1
Miscellaneous				
Additional Note		RigiProfil MultiTec is European patented (No. EP 3 017 120)		
Notes				
Storage		Dry Flat and level Air access		
Shelf Life		Unlimited		
Form of delivery		According to Pricelist		
Waste key		17 04 05		

The values listed in this product data sheet only reflect the performance characteristics of the products. In addition, gypsum plaster systems have structural and structural properties, which can be found in our system documentation (e. g. Planen und Bauen).

The information in this publication is based on our current technical knowledge and experience. In view of the many factors that may affect processing and application of our products, these data do not relieve the users of our products from the responsibility of carrying out their own inspections and tests, as they only represent general guidelines. They neither do imply any legally binding assurance of certain properties or of suitability for a particular application. It is the responsibility of those to whom we supply our products to ensure that any proprietary rights and existing laws and regulations are observed. We reserve the right to modifications in the interests of technical advancement without prior notice.