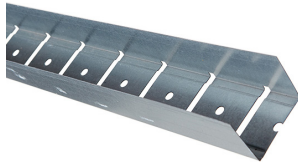








## Product data sheet

# Rigips wall profile UW 75 prepunched

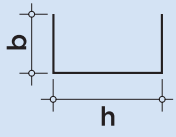


**Product description:** Profile made of steel according to DIN EN 10346. Material tolerances according to DIN EN 10143. The profiles are pre-punched at the web. One flange of the profile has to be slit on site.

**Area of application:** For creating curved substructures in gypsum board systems.

					
Oberfläche glatt	Korrosions- schutz Z100	Anwendung Innenraum	Baustoffklasse A1	Blechdicke 0,6 mm	Lagerung

## Technical specifications

Parameters	Sign	Value	UOM	Drawing
<b>Dimensions</b>				
Metal thickness	t	0.6	mm	
Profile height	h	75.0	mm	
	Nominal	75	mm	
Profile width	b	39.8	mm	
	Nominal	40	mm	
Length	l	3,000	mm	
Round hole	Ø	6.5	mm	
Round hole spacing		100	mm	
Slot spacing		50	mm	

Parameters	Sign	Value	Unit	Certification
<b>Material</b>				
Type of material		Galvanised sheet steel		EN 10346
Material		DX51D+Z		
Corrosion protection		Z100		EN 14195
Surface		Smooth		

The information in this publication is based on our current technical knowledge and experience. In view of the many factors that may affect processing and application of our products, these data do not relieve the users of our products from the responsibility of carrying out their own inspections and tests, as they only represent general guidelines. They neither do imply any legally binding assurance of certain properties or of suitability for a particular application. It is the responsibility of those to whom we supply our products to ensure that any proprietary rights and existing laws and regulations are observed. We reserve the right to modifications in the interests of technical advancement without prior notice.

## Product data sheet

Rigips wall profile UW 75 prepunched

Parameters	Sign	Value	Unit	Certification
<b>Notes</b>				
Storage		Dry Flat and level Air access		
Shelf Life		Unlimited		
Form of delivery		According to Pricelist		
Waste key		17 04 05		

The values listed in this product data sheet only reflect the performance characteristics of the products. In addition, gypsum plaster systems have structural and structural properties, which can be found in our system documentation (e. g. Planen und Bauen).

The information in this publication is based on our current technical knowledge and experience. In view of the many factors that may affect processing and application of our products, these data do not relieve the users of our products from the responsibility of carrying out their own inspections and tests, as they only represent general guidelines. They neither do imply any legally binding assurance of certain properties or of suitability for a particular application. It is the responsibility of those to whom we supply our products to ensure that any proprietary rights and existing laws and regulations are observed. We reserve the right to modifications in the interests of technical advancement without prior notice.